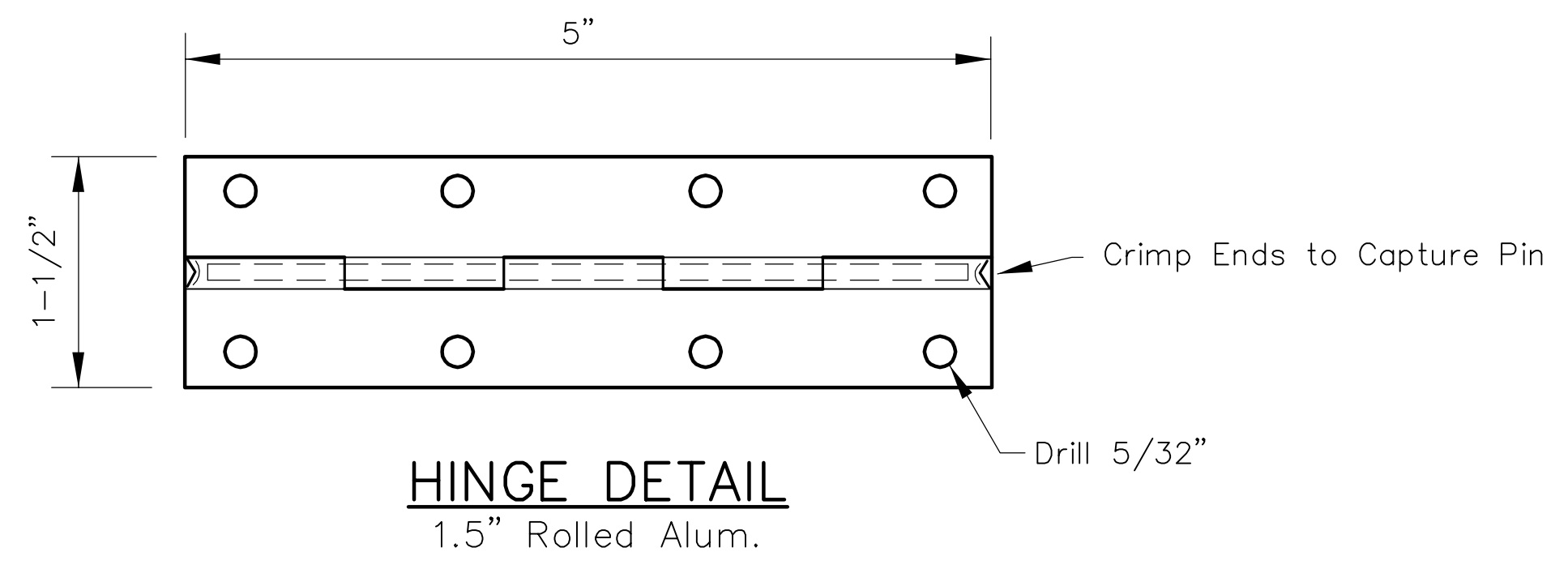
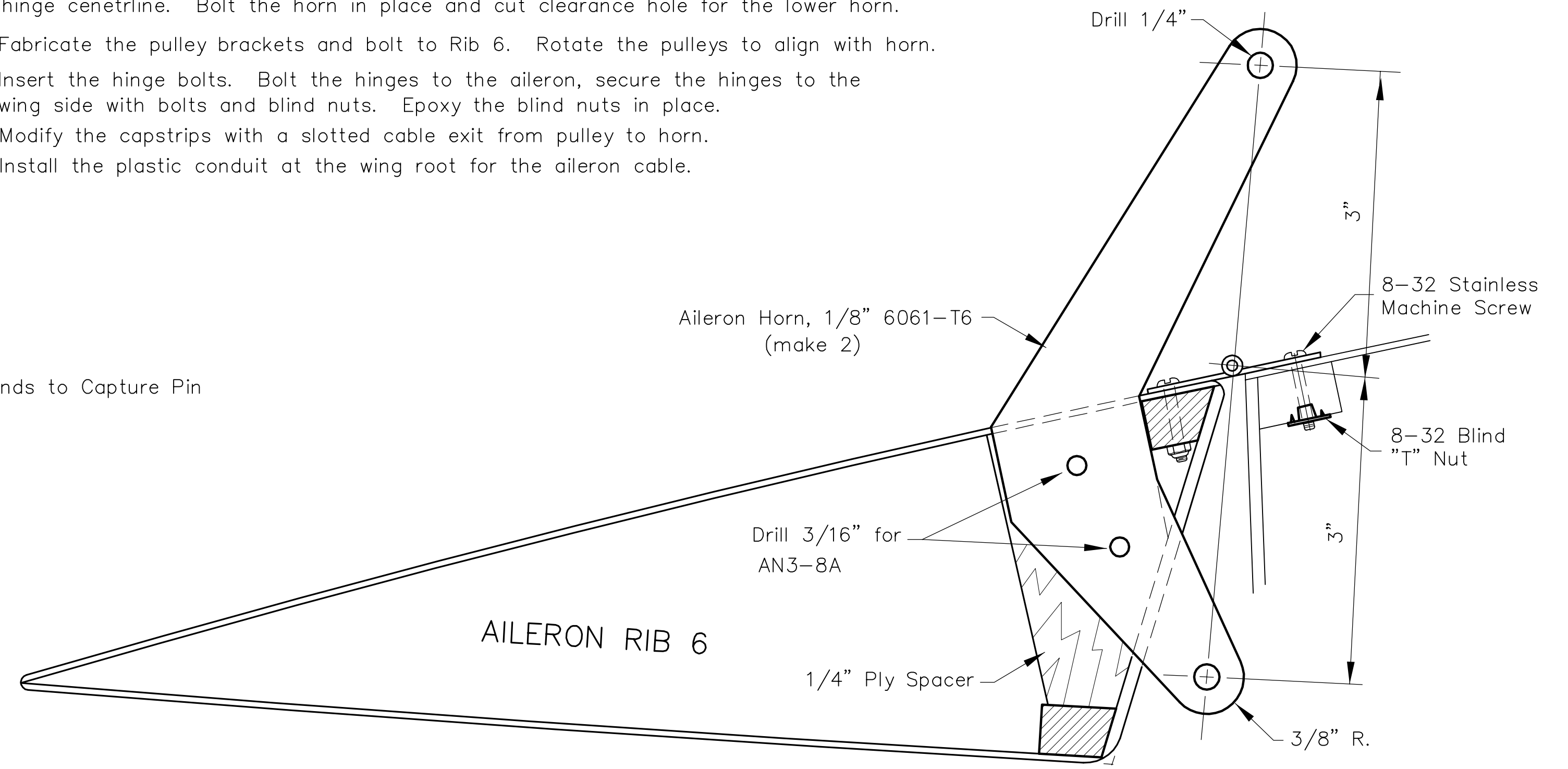


**SECTION "C-C"**  
No Scale

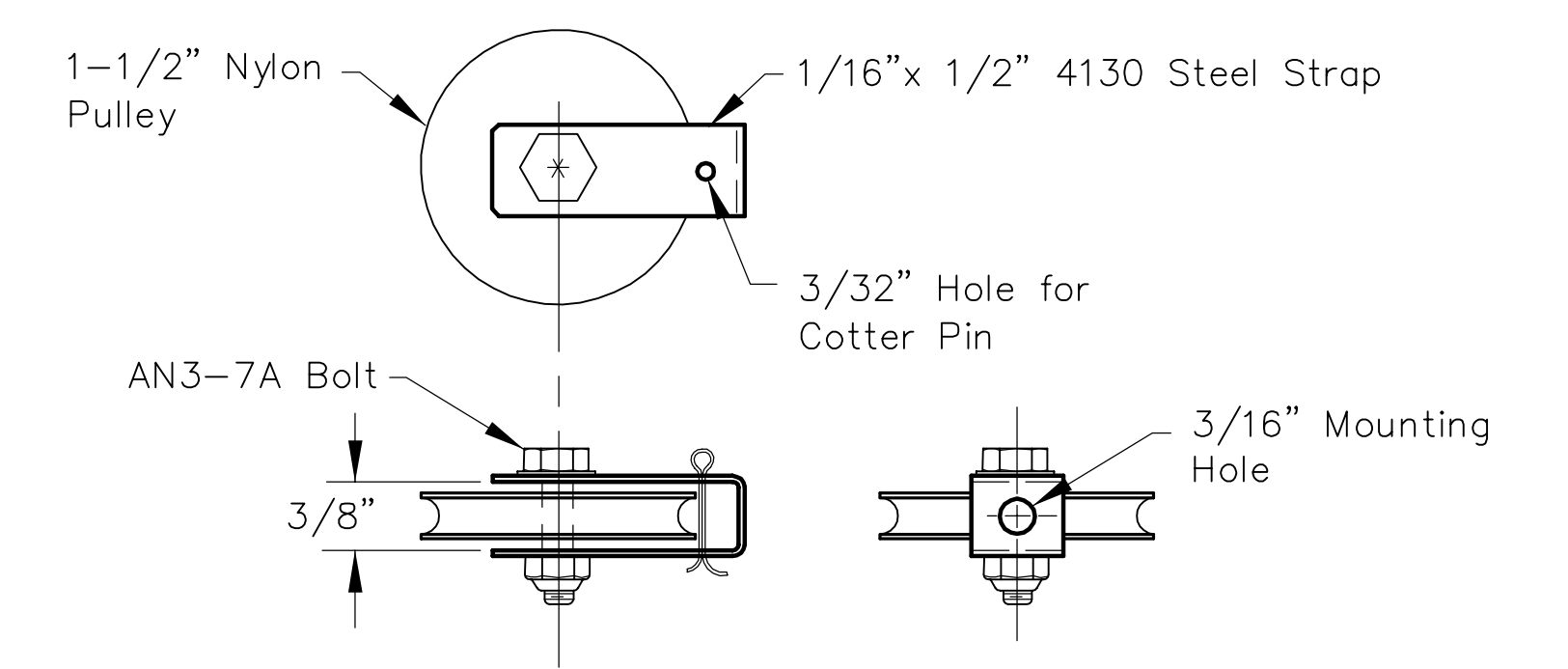
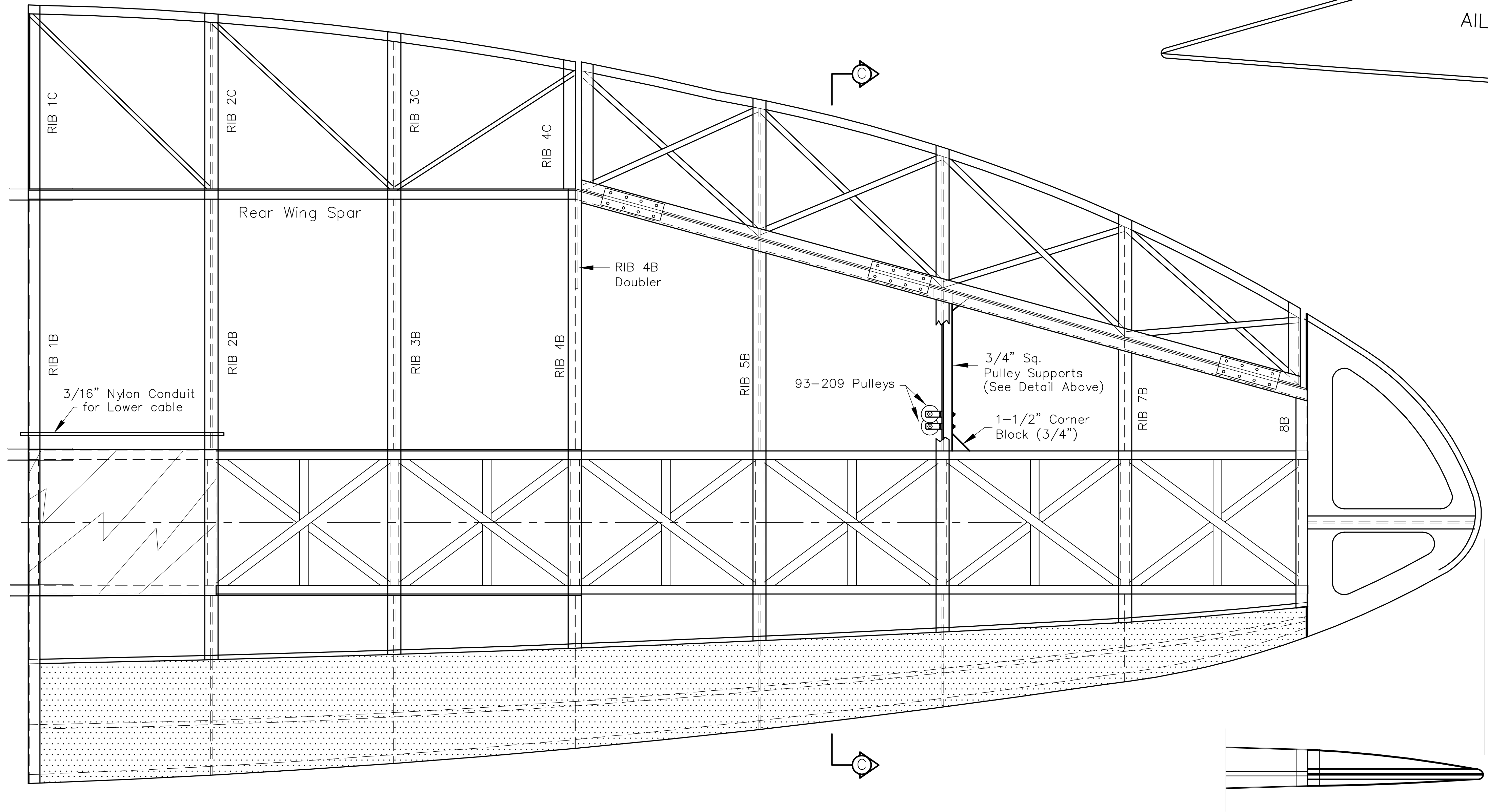


**NOTES:**

1. Locate and drill the holes for the pulley brackets from the dimensions shown. Epoxy the 3/4" sq. supports and corner blocks to outboard rib 6.
2. Fabricate the aileron horns and 1/4" ply spacers. Slot the capstrips to fit.
3. Locate the aileron horn on the rib. A line thru the horn eyes should align with hinge centerline. Bolt the horn in place and cut clearance hole for the lower horn.
4. Fabricate the pulley brackets and bolt to Rib 6. Rotate the pulleys to align with horn.
5. Insert the hinge bolts. Bolt the hinges to the aileron, secure the hinges to the wing side with bolts and blind nuts. Epoxy the blind nuts in place.
6. Modify the capstrips with a slotted cable exit from pulley to horn.
7. Install the plastic conduit at the wing root for the aileron cable.



**AILERON HORN DETAIL**  
Full Scale



**AILERON PULLEY ASSEMBLY**  
4 Req'd.